

Lancashire Walks



Rivington

As a destination to suit all the family Rivington is hard to beat. While the more energetic set out to explore the terrace gardens of Lord Leverhulme's estate, senior members of the family are free to potter about the Great Barn or wander at their own pace in Lever Park. We originally published this as 'A perfect Christmas walk' which indeed it is, but it is a walk that can be enjoyed in any season of the year. This route through the gardens should be regarded as a general guideline; the main idea is to keep going up.

Start: The Great House Barn car park. From the M61 junction 6 follow signs for Bolton Centre. At roundabout for A673 turn right to Horwich. After almost two miles go straight ahead at next main roundabout and then turn right onto Rivington Lane. After a further mile & a half you will see the Great House Barn car park on the left.

Distance: 7 Km or 4½ miles

Time: 2 hours, but allow an hour more for deviations

Terrain: The gardens are steeply sloped. On frosty days special care will need to be taken especially near the feature referred to as the Ravine. Children will need to be supervised at all times, but please do not let this deter you from a great adventure.

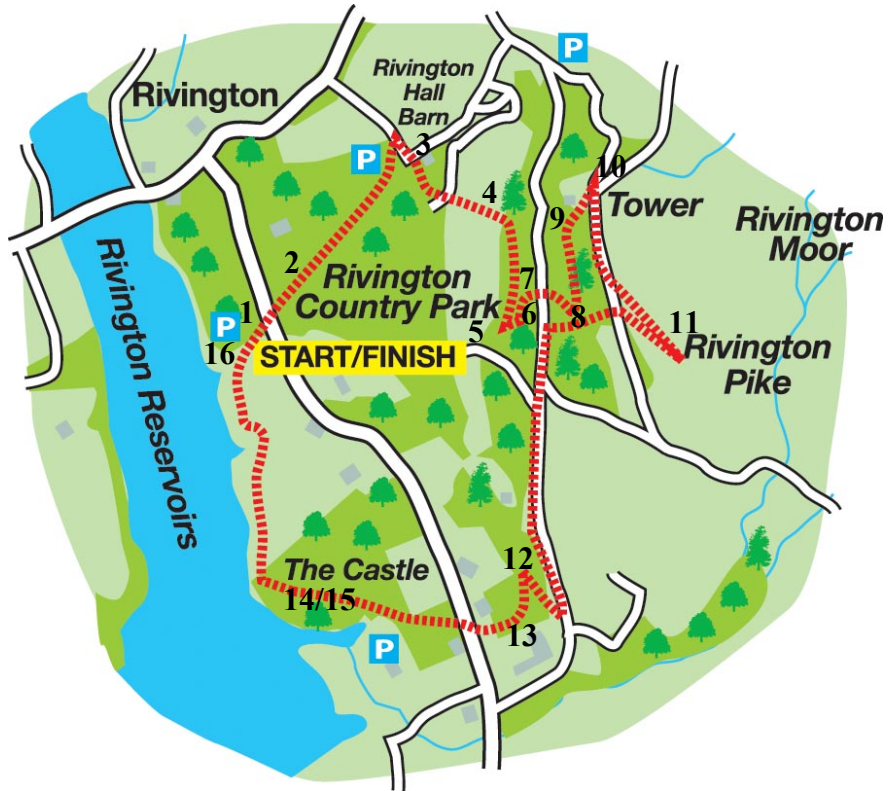
Map: OS Explorer 287 West Pennine Moors

1. Car park to Jubilee Tower Rivington Pike. (3 Km or 2 miles: 1 hour)

From the car park pass the Great House Barn **(Pic 1)** and after crossing Rivington Lane walk up the avenue towards Rivington Hall. **(Pic 2)** Immediately options seem to open up, but for those of you desirous of following the route, bear left on a drive past the handsome hall, pass the Great Barn and turn right onto a broad track. Keep ahead passing Rivington Hall Cottage on your left to enter woodland. **(Pic 3)** The track leads onto a kissing gate that gives out onto a strip of pasture to enter the site of the terraced gardens. **(Pic 4)** At the entrance there is a detailed map of the site so you will be in a position to chart your own route to the top. What follows is a suggestion only. On the broad track by which you entered the woods keep ahead until it forks and then go right. This will bring you to the first of a number of summer houses, now barred off for safety reasons. **(Pic 5)** Continue past it to arrive at the lower parts of a feature called the ravine. Above you will sight an appealing bridge which you can soon cross by continuing to the next junction of paths and then switching back left. **(Pic 6)** Close to the bridge are rocky grottoes (alas at the time of writing at least, without Santa) of the type to appeal to children. **(Pic 7)** At the next turn beyond these a flight of stone steps lead to an ornamental lake - the Japanese Garden. **(Pic 8)** Continue left. You will come to an open expanse which was the Great Lawn. At the rear of the further lawn an arched entrance puts you onto steps that will bring you to the site of the bungalow itself. **(Pic 9)** From here take a track leading up to the Pigeon Tower **(Pic 10)** and the edge of the moors. Turn right for the Pike. **(Pic 11)**

2. Rivington Pike to car park. (4 Km or 2½ miles: 1½ hours)

The following incorporates a visit to the replica ruins of Liverpool Castle. From the tower return to the main track and re-enter the gardens by a kissing gate to the left. The path drops down past the Japanese Gardens and reaches the broad track Royton Lane. Turn left on this and exit the woods. At the next gate turn sharp right to re-enter woods. The path leads down to a broad avenue. **(Pic 12)** Here turn left. After 150 metres at a marker post turn right onto a footpath. **(Pic 13)** Ahead the grounds of a school will come into view through trees. Bear to the right of them and then on a more definite track reach Rivington Lane. Cross onto another woodland track and then turn right when this quickly comes to a wide avenue. This leads down to the replica ruins of Liverpool Castle. **(Pics 14 & 15)** The choice of ruin demonstrates the close ties between the area and Liverpool which since the mid 19th Century has drawn its water from the series of reservoirs below the moors. From the castle keep ahead on a path that hugs the shores of the reservoir until you arrive at the apparatus of the "Go Ape" facility located behind the car park. **(Pic 16)** Here turn right. In minutes you will be back at the car.



Map by Chris Wyatt at The Blackpool Gazette

Pic 1



Pic 2



Pic 3



Pic 4



Pic 5



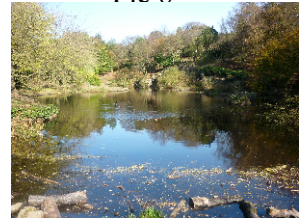
Pic 6



Pic 7



Pic 8



Pic 9



Pic 10



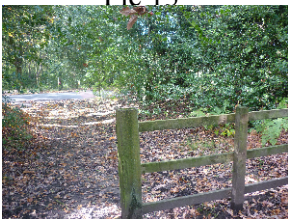
Pic 11



Pic 12



Pic 13



Pic 14



Pic 15



Pic 16

