



Places to hire and charge an electrical bicycle in the Forest of Bowland AONB

BOWLAND ELECTRIC BICYCLE NETWORK



Bowland Experience Limited (BEx) has been formed as a commercial subsidiary of the charity Champion Bowland. BEx provides a long term framework for supporting and promoting the tourism businesses of the Forest of Bowland AONB area. Visit www.bowlandexperience.com for details of member organisations and their activities and services.

For more information about the Forest of Bowland AONB visit www.forestofbowland.com or stay in touch via twitter.com/forestofbowland
 Forest of Bowland AONB, The Stables, 4 Root Hill Estate Yard, Whitewell Road, Dunsop Bridge, Lancashire, BB7 3AY
 Tel: 01200 448000 email: Bowland@lancashire.gov.uk
 All those enjoying the Forest of Bowland AONB are asked to follow the Countryside Code at www.countrysideaccess.gov.uk and adhere to signs, particularly at sensitive times such as the lambing and birding nesting seasons during spring and summer.

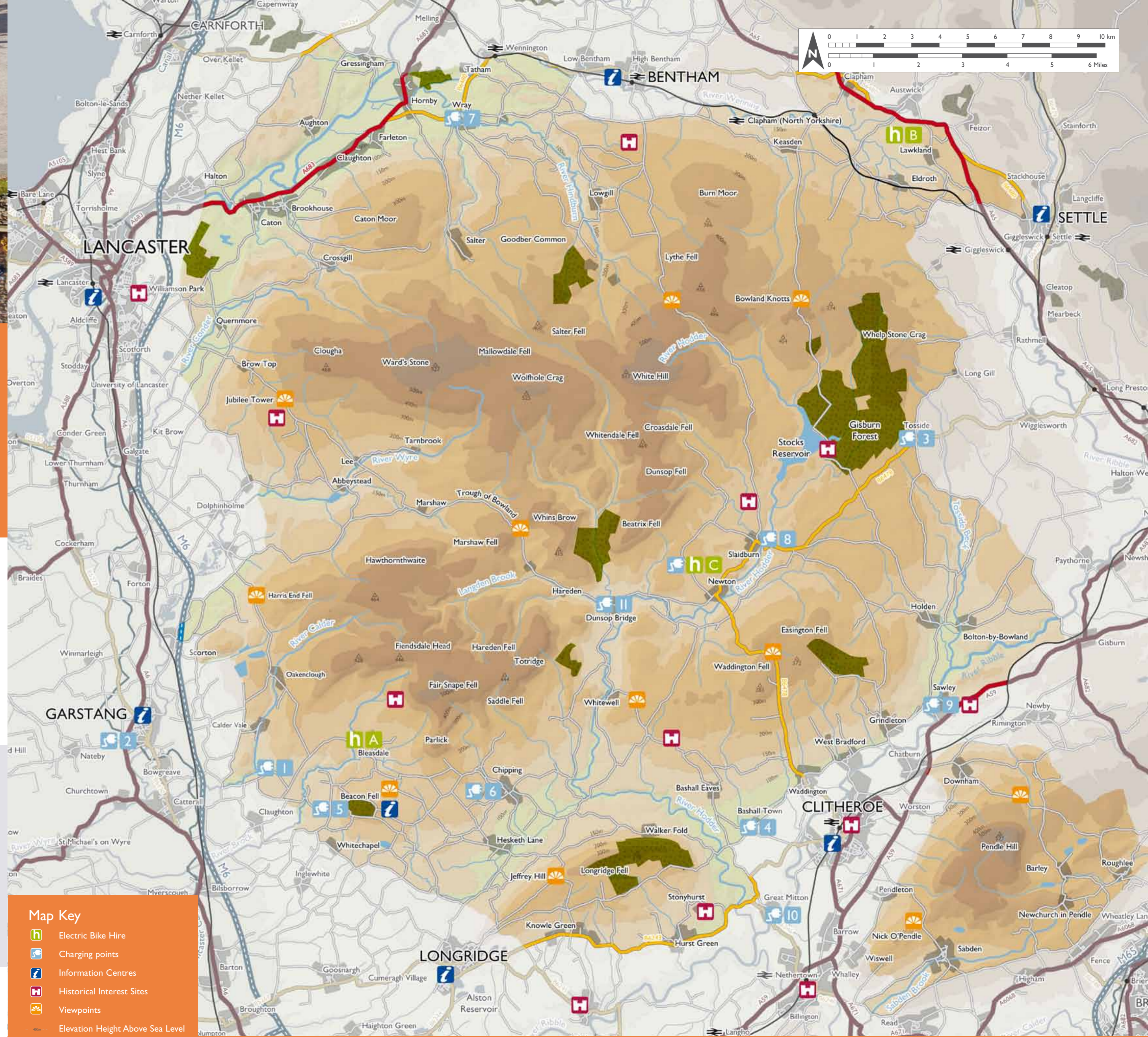
For other information about places to visit and things to see and do in the area, contact Visitor Information Centres:
Bowland Visitor Centre – Beacon Fell Country Park, 01995 640557
Barnoldswick – Fernlea Avenue, 01282 666704
Bentham – Town Hall, Station Road, 01524 262549
Clitheroe – Platform Gallery & Visitor Information Centre, Station Rd, 01200 425566
Colne – Boundary Mill Stores, 01282 856186
Garstang – Cherestanc Square, Off Park Hill Road, 01995 602125
Lancaster – The Storey, Meeting House Lane, 01524 582394
Pendle Heritage Centre – Park Hill, Barrowford, 01282 661701
Preston – The Guild Hall, 01772 253731
Settle – Town Hall, 07129 825192

Also visit:
Marketing Lancashire www.visitlancashire.com
Welcome to Yorkshire www.yorkshire.com

Ordnance Survey Map Explorer OL41, Forest of Bowland & Ribblesdale covers this area as well as a Harvey Map: Forest of Bowland for walkers, cyclists and horserider.

Leaflet available in large text format on request.

Front cover photograph - © Veronica Caperon



Map Key

- Electric Bike Hire
- Charging points
- Information Centres
- Historical Interest Sites
- Viewpoints
- Elevation Height Above Sea Level

For full information about facilities view an Interactive Map of the Forest of Bowland AONB at www.forestofbowland.com/interactivemap

Produced by Countryside. Contains Ordnance Survey data © Crown copyright and database right 2013.